

REGIONAL HEALTHCARE PARTNERSHIP

RHP Region 4 Health Plan

(As Submitted to CMS on April 9, 2013)

**Medicaid/CHIP Regional Advisory Committee
Corpus Christi Service Area
June 25, 2013**



1

Anchor Entity

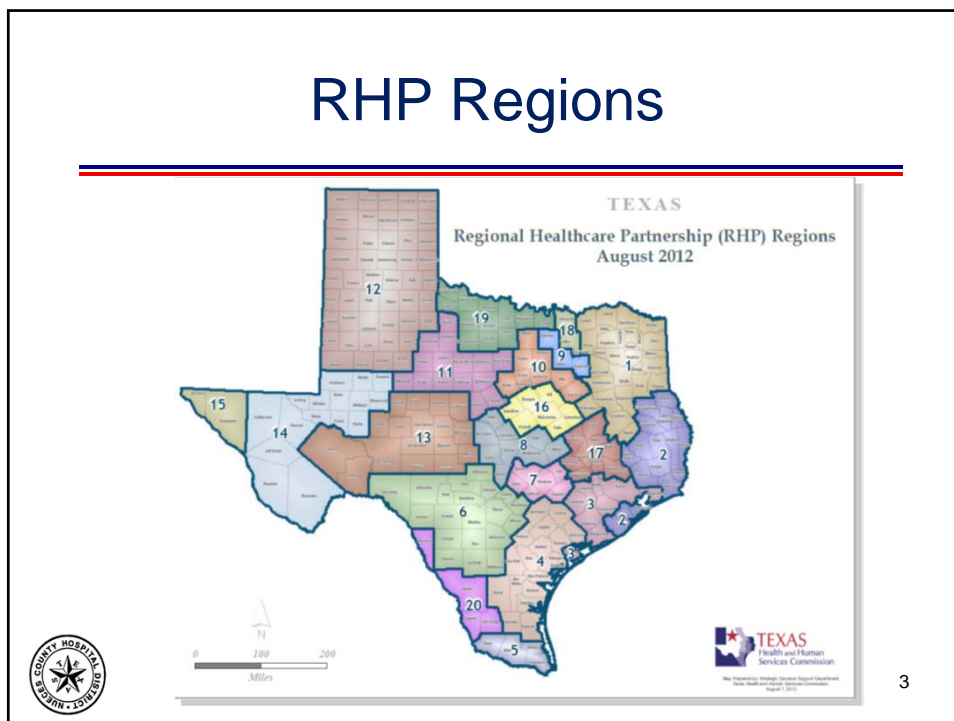
**Nueces County Hospital District
Regional Healthcare Partnership
Region 4 Anchor Entity
555 N. Carancahua St., Suite # 950
Corpus Christi, TX 78401-0835**

**Telephone: (361) 808-3300
Facsimile: (361) 808-3274**



2

RHP Regions



RHP 4 Counties

- Aransas
- Bee
- Brooks
- DeWitt
- Duval
- Goliad
- Gonzales
- Jackson
- Jim Wells
- Karnes
- Kenedy
- Kleberg
- Lavaca
- Live Oak
- Nueces
- Refugio
- San Patricio
- Victoria



Counties with Hospital(s)

- Aransas
- Bee
- DeWitt
- Gonzales
- Jackson
- Jim Wells
- Karnes
- Kleberg
- Lavaca
- Nueces
- Refugio
- Victoria



5

Counties without a Hospital

- Duval
- Goliad
- Kenedy
- Live Oak
- San Patricio



6

Local Mental Health Authorities

- Coastal Plains:
 - Aransas County
 - Bee County
 - Brooks County
 - Duval County
 - Kenedy County
 - Kleberg County
 - Jim Wells County
 - Live Oak County
 - San Patricio County
- Gulf Bend:
 - DeWitt County
 - Goliad County
 - Jackson County
 - Lavaca County
 - Refugio County
 - Victoria County



7

Local Mental Health Authorities continued...

- Bluebonnet Trails:
 - Gonzales County
- Camino Real:
 - Karnes County
- Nueces:
 - Nueces County



8

Informational Websites

- **THHSC Waiver Information:**
<http://www.hhsc.state.tx.us/1115-waiver.shtml>
- **Region 4 Health Plan:**
<http://www.hhsc.state.tx.us/1115-docs/RHP/Plans/RHP4Plan.pdf>



9

Federal Approval

Texas Healthcare Transformation and Quality Improvement Program 1115 Waiver

- **Approved in December 2011 by U.S. Department of Health & Human Services, Centers for Medicare & Medicaid Services.**



10

Demonstration Project

- **Social Security Act, Section 1115 (42 U.S.C. 1315):**
 - Provides the Secretary of Health and Human Services broad authority to waive statutory and regulatory provisions of federal health and welfare programs, including Medicaid and SCHIP.
 - For experimental, pilot, or demonstration projects likely to assist in promoting program objectives.
 - Waivers required to be budget neutral for the federal government.



11

Purpose

Texas Healthcare Transformation and Quality Improvement Program 1115 Waiver

1. **Managed care expansion:**
 - Allows statewide Medicaid managed care services in Texas.
2. **Replaces Upper Payment Limit (UPL) Program for Hospitals:**
 - Uncompensated care (UC) pool for hospitals.
 - Delivery system reform incentive payment (DSRIP) pool for hospitals, mental health authorities, public health departments, and certain academic physician groups.
 - Texas has potential to receive up to \$29 billion over 5 years.
 - \$14 billion more than former UPL program.



12

Payments to Providers

- **Waiver Payment Pools:**
 - **Uncompensated Care (UC)**
 - Reimburse **hospitals** for the cost of care for Medicaid and uninsured patients for which the hospitals do not receive payment (DY 1 – 5).
 - **Delivery System Reform Incentive Payments (DSRIP)**
 - Payments to hospitals, local mental health authorities, public health departments, and certain academic physician groups upon their achieving certain goals intended to improve quality and lower the cost of care (DY 2 – 5), (DY 1 Planning funds only).



13

Project Categories Overview

- **Category 1: Infrastructure Development**
 - Lays the foundation for the delivery system through investments in people, places, processes, and technology. Pay for performance.
- **Category 2: Program Innovation & Redesign**
 - Pilots, tests, and replicates innovative care models. Pay for performance.



14

Project Categories Overview continued...

- **Category 3: Quality Improvements**
 - Disseminates up to four interventions in which major improvements can be achieved within four years. Pay for reporting, then performance.
- **Category 4: Population-based Improvements**
 - Requires all hospitals (only) to report on the same measures. Pay for reporting.



15

Health Plan Organization

- **Section I: RHP Organization**
 - Key partners and performing providers in 18-county region.
- **Section II: Executive Overview**
 - Overview, key health challenges, and Pass 1 projects performing providers propose to implement in the next 4 years (DY 2 – 5).
- **Section III: Community Needs Assessment**
 - Health needs addressed by RHP Plan's projects.



16

Health Plan Organization continued...

- **Section IV: Stakeholder Engagement**
 - Description of stakeholder engagement process.
- **Section V: DSRIP Projects**
 - Project descriptions of proposed Pass 1 & 2 projects:
 - Category 1: Infrastructure development.
 - Category 2: Program innovation and redesign.
 - Category 3: Quality improvements.
 - Category 4: Population-focused improvements (hospitals only).



17

Health Plan Organization continued...

- **Section VI: RHP Participation Certifications**
 - Certifications of performing providers.
- **Section VII: Addendums**
 - Private hospital certifications.
 - DSRIP projects considered, but not selected.
 - Collaboration agreements.



18

Performing Providers

- **RHP 4 Healthcare Partnership Entities (21):**

- **Hospitals (15)**

- ✓ **Safety Net Hospitals (3)**

- CHRISTUS Spohn Hospital – Corpus Christi
- Corpus Christi Medical Center – Bay Area
- Driscoll Children's Hospital

- ✓ **Critical Access Hospitals (4)**

- Jackson County Hospital District, Edna
- Lavaca Medical Center, Hallettsville
- Otto Kaiser Memorial Hospital, Kenedy
- Refugio County Memorial Hospital District, Refugio



19

Performing Providers continued...

- **RHP 4 Healthcare Partnership Entities (21):**

- **Hospitals (15) continued:**

- ✓ **Community Hospitals (8)**

- Christus Spohn Hospital – Alice
- Christus Spohn Hospital – Beeville
- Christus Spohn Hospital – Kleberg
- Citizens Medical Center (Victoria)
- Cuero Community Hospital
- DeTar Healthcare System (Victoria)
- Gonzales Memorial Hospital
- Yoakum Community Hospital



20

Performing Providers continued...

- **RHP 4 Healthcare Partnership Entities (21):**
 - **Local Mental Health Authorities (5)**
 - Bluebonnet Trails Community Center, Round Rock
 - Camino Real Community Center, Lytle
 - Coastal Plains Community Center, Portland
 - Gulf Bend Community Center, Victoria
 - Nueces County Community Center, Corpus Christi
 - **Local Public Health Department (1)**
 - Corpus Christi-Nueces County Public Health District
 - **Academic Physician Groups (0)**



21

Project Counts by Provider Type

- **Infrastructure Development Projects (Category 1):**
 - **Total Count = 41**
 - Hospitals = 36
 - Local Mental Health Authorities = 3
 - Local Public Health Departments = 2
- **Innovation & Redesign Projects (Category 2):**
 - **Total Count = 47**
 - Hospitals = 37
 - Local Mental Health Authorities = 8
 - Local Public Health Departments = 2



22

Project Values by Provider Type

- **Infrastructure Development Projects (Category 1):**

- **Total Values = \$72,086,654**
 - Hospitals = \$67,806,659
 - Local Mental Health Authorities = \$1,404,627
 - Local Public Health Departments = \$2,875,369

- **Innovation & Redesign Projects (Category 2):**

- **Total Values = \$87,044,288**
 - Hospitals = \$67,916,598
 - Local Mental Health Authorities = \$13,418,648
 - Local Public Health Departments = \$5,709,042



23

Project Categories Summary

- **Infrastructure Development (Category 1):**

- See handout for detailed information on project counts, values, and averages.

- **Innovation & Redesign (Category 2):**

- See handout for detailed information on project counts, values, and averages.



24

Selected Project Areas

- **Top 3 Infrastructure Development Project Options:**
 - 1.1 – Primary Care Capacity (11 projects, 12.5%)
 - 1.7 – Telemedicine/Telehealth (8 projects, 9.1%) *Tie*
 - 1.9 – Specialty Care Capacity (8 projects, 9.1%) *Tie*
 - 1.3 – Chronic Disease Management Registry (6 projects, 6.8%)



25

Selected Project Areas continued...

- **Top 3 Innovation & Redesign Project Options:**
 - 2.11 – Conduct Medication Management (8 projects, 9.1%)
 - 2.8 – Process Improvement for Quality/Efficiency (7 projects, 8.0%)
 - 2.12 – Care Transitions Programs (6 projects, 6.8%) *Tie*
 - 2.15 – Integrate Primary & Behavioral Services (6 projects, 6.8%) *Tie*



26

Project Option Areas

- **Category 1 – Infrastructure Development:**

- 1.1 – Primary Care Capacity (11 projects)
- 1.2 – Primary Care Workforce (2 projects)
- 1.3 – Chronic Disease Management Registry (6 projects)
- 1.7 – Telemedicine/Telehealth (8 projects)
- 1.8 – Dental Services (1 project)
- 1.9 – Specialty Care Capacity (8 projects)
- 1.12 – Service Availability Behavioral Health Care (3 projects)
- 1.13 – Behavioral Health Crisis Stabilization (2 projects)



27

Project Option Areas continued...

- **Category 2 – Program Innovation & Redesign:**

- 2.1 – Medical Homes (1 project)
- 2.2 – Chronic Care Management Models (1 project)
- 2.5 – Redesign for Cost Containment (3 projects)
- 2.6 – Health Promotion Programs (4 projects)
- 2.7 – Disease Prevention Programs (4 projects)
- 2.8 – Process Improvement for Quality/Efficiency (7 projects)
- 2.9 – Patient Care Navigation Programs (1 project)
- 2.10 – Palliative Care Programs (1 project)
- 2.11 – Conduct Medication Management (8 projects)



28

Project Option Areas continued...

- **Category 2 – Program Innovation & Redesign, continued:**

- 2.12 – Care Transitions Programs (6 projects)
- 2.13 – Prevent Behavioral Health Unnecessary Use (1 project)
- 2.15 – Integrate Primary and Behavioral Services (6 projects)
- 2.18 – Mental Health Peer Support Services (1 project)
- 2.19 – Care Management Primary & Behavioral Health (4 projects)



29

Next Steps – Federal

- **Centers for Medicare & Medicaid Services:**

- **October 31, 2013**

- Respond to HHSC & CMS Initial Feedback
- Submit RHP 4 Plan Revisions



30

General Information

- **Texas Health & Human Services Commission:**
 - **Waiver Information:**
<http://www.hhsc.state.tx.us/1115-waiver.shtml>
 - **Waiver Comments/Questions:**
TXHealthcareTransformation@hhsc.state.tx.us
- **RHP Region 4:**
 - **Regional Health Plan:**
<http://www.nchdcc.org/regional-healthcare-partnership-plan.cfm>
 - **Regional Health Plan Public Meeting Notices:**
<http://www.nchdcc.org/public-notice.cfm>



31

RHP 4 Plan Contact

Nueces County Hospital District
Attn: Jonny F. Hipp, ScD, FACHE, Administrator
Regional Healthcare Partnership
Region 4 Anchor Entity
555 N. Carancahua St., Suite # 950
Corpus Christi, TX 78401-0835

Telephone: (361) 808-3300
Facsimile: (361) 808-3274
Electronic Mail: jonny.hipp@nchdcc.org



32